



MERYLLION
RESOURCES CORPORATION

Makenzie

Gold/Silver/Antimony

Project

Nye County
Nevada

July 2025

Disclaimer

The information in this presentation has been prepared as at July 1st 2025. This presentation may contain “forward looking statements” and “forward-looking information” within the meaning of applicable securities laws, including statements regarding the plans, intentions, beliefs and current expectations of Meryllion Resources. (the “Company”) with respect to future business activities and operating performance. Forward-looking information is often identified by the words “may”, “would”, “could”, “should”, “will”, “intend”, “plan”, “anticipate”, “believe”, “estimate”, “expect” or similar expressions and include information regarding: (i) the amount of future production over any period; (ii) assumptions relating to revenues, operating cash flow and other revenue metrics set out in the Company's disclosure materials; and (iii) future exploration plans. Investors are cautioned that forward-looking information is not based on historical facts but instead reflect the Company's management's expectations, estimates or projections concerning future results or events based on the opinions, assumptions and estimates of management considered reasonable at the date the statements are made. Although the Company believes that the expectations reflected in such forward-looking information are reasonable, such information involves risks and uncertainties, and undue reliance should not be placed on such information, as unknown or unpredictable factors could have material adverse effects on future results, performance or achievements of the combined company. Among the key factors that could cause actual results to differ materially from those projected in the forward-looking information are the following: the future exploration activities planned at the Australian operations and anticipated effects thereof; changes in general economic, business and political conditions, including changes in the financial markets; changes in applicable laws; and compliance with extensive government regulation. Exploration results that include geophysics, sampling, and drill results on wide spacings may not be indicative of the occurrence of a mineral deposit. Such results do not provide assurance that further work will establish sufficient grade, continuity, metallurgical characteristics and economic potential to be classed as a category of mineral resource. A mineral resource that is classified as “inferred” or “indicated” has a great amount of uncertainty as to its existence and economic and legal feasibility. It cannot be assumed that any or part of an “indicated mineral resource” or “inferred mineral resource” will ever be upgraded to a higher category of resource. Investors are cautioned not to assume that all or any part of mineral deposits in these categories will ever be converted into proven and probable reserves. This forward-looking information may be affected by risks and uncertainties in the business of the Company and market conditions.

Details of the Company's procedures and policies for data verification, the reader is referred to the Company's website at www.meryllionresources.com.

Qualified Person:

Mark J Pryor, SEG, FGS, IOD, SACNASP, is the Technical Advisor to Meryllion Resources Corporation. Mr. Pryor is a “Qualified Person” as defined by the NI43-101 Standards of Disclosure for Mineral Projects, and has reviewed and approved the scientific and technical disclosure set out in this presentation.

Makenzie Project

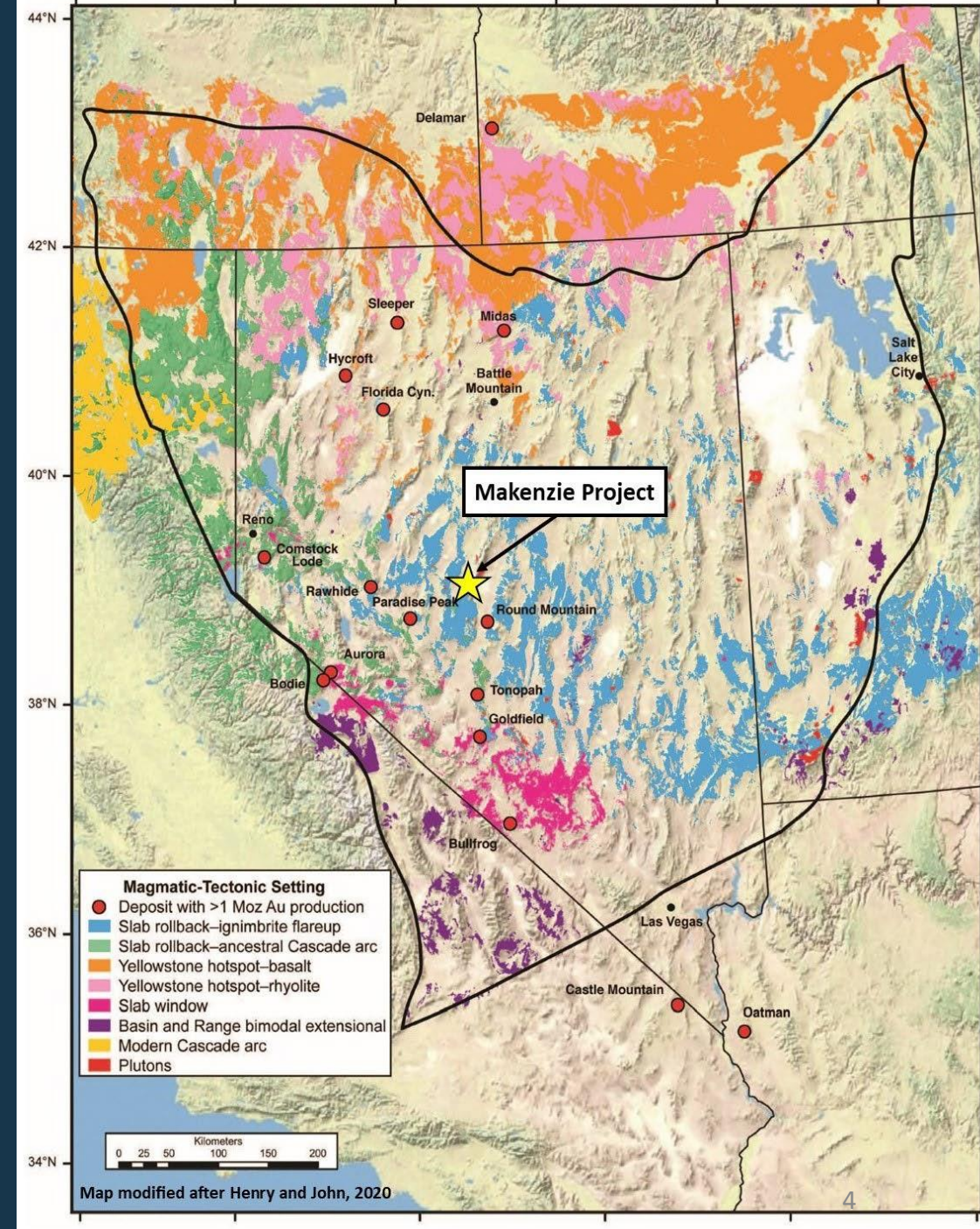
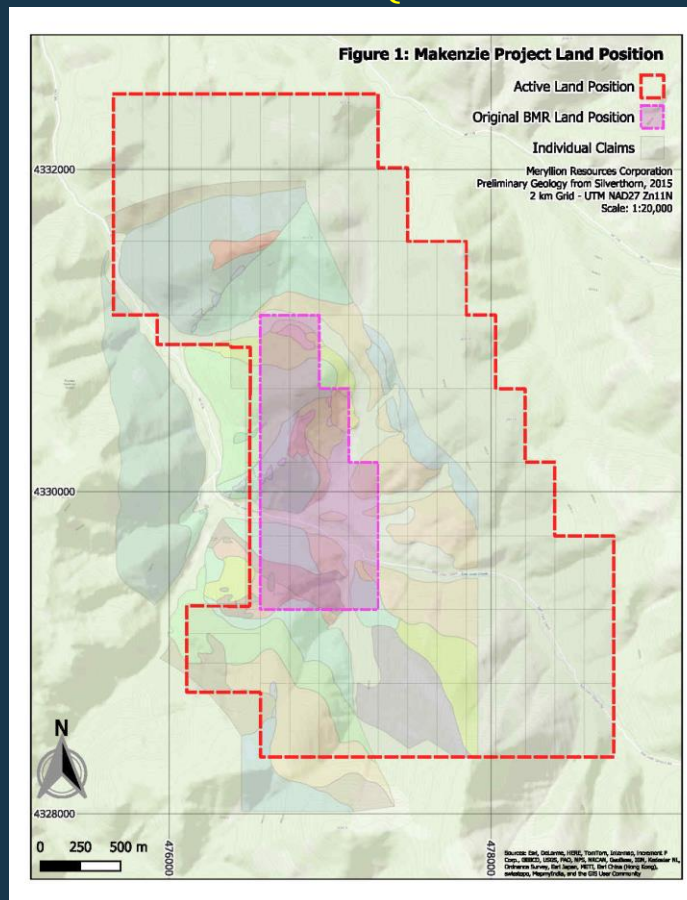
A low sulphidation epithermal style multi-vein U/G target



View looking North from Rhyolite Hill towards the
alteration and veining on Antimony Hill
~3kms distance

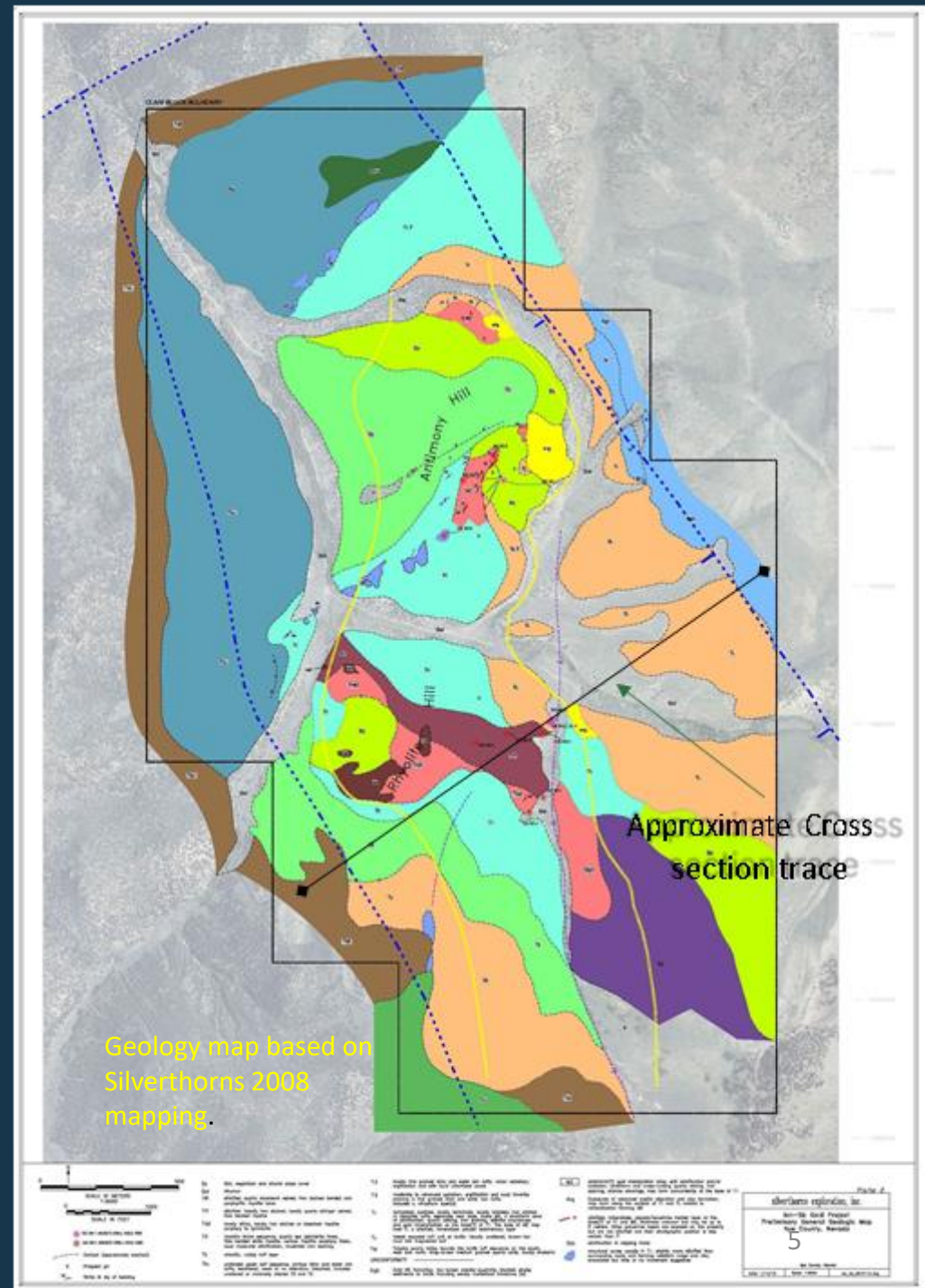
Location

- One of the largest untested gold, silver, antimony targets in Nevada.
- Located roughly 44 km south-southwest of Austin, NV in the Toiyabe Range, Central Nevada.
- ~48 km north-northwest of Round Mountain (>10Moz Kinross Gold Corp.) and 74 km northeast of Paradise Peak (1.6Moz Au + 24.1Moz Ag produced from 1986 to 1994) with both projects having similar geology to Makenzie.
- The project comprises 13 leased claims (BMR) and 89 newly located claims – totaling 102 claims, over an area of 8.34km².



Project Geology

- Low-sulfidation stockwork veins and disseminated mineralisation with associated steam-heated alteration
- Main target area is aligned north-south and bounded by north-northwest trending normal faults.
- A series of dikes and silicified breccia bodies, aligned N/S and NE, having widths of up to 100m, intrude into an ~250m thick package of water lain felsic tuffs and tuffaceous sediments.
- Structures and alteration patterns are oriented north- northeast (~15-20°).
- ~2.5 km of steam heated (intense argillic & silicic) alteration along strike and up to ~1km wide, as a result of intrusion of the dikes and brecciation into the tuffaceous horizons.
- N/S trending strata-bound mineralisation is documented in both the silicified mudstones and other water lain sediments.
- Alteration is best exposed on Antimony Hill and Rhyolite Hill.



Low Sulphidation Epithermal Style Mineralisation.

- Epithermal mineralisation is common throughout the project area both as typical banded low- sulfidation epithermal veins and as disseminated mineralisation.
- Controls are both structural and stratiform as well as in association with well-altered intrusive felsic intrusions.



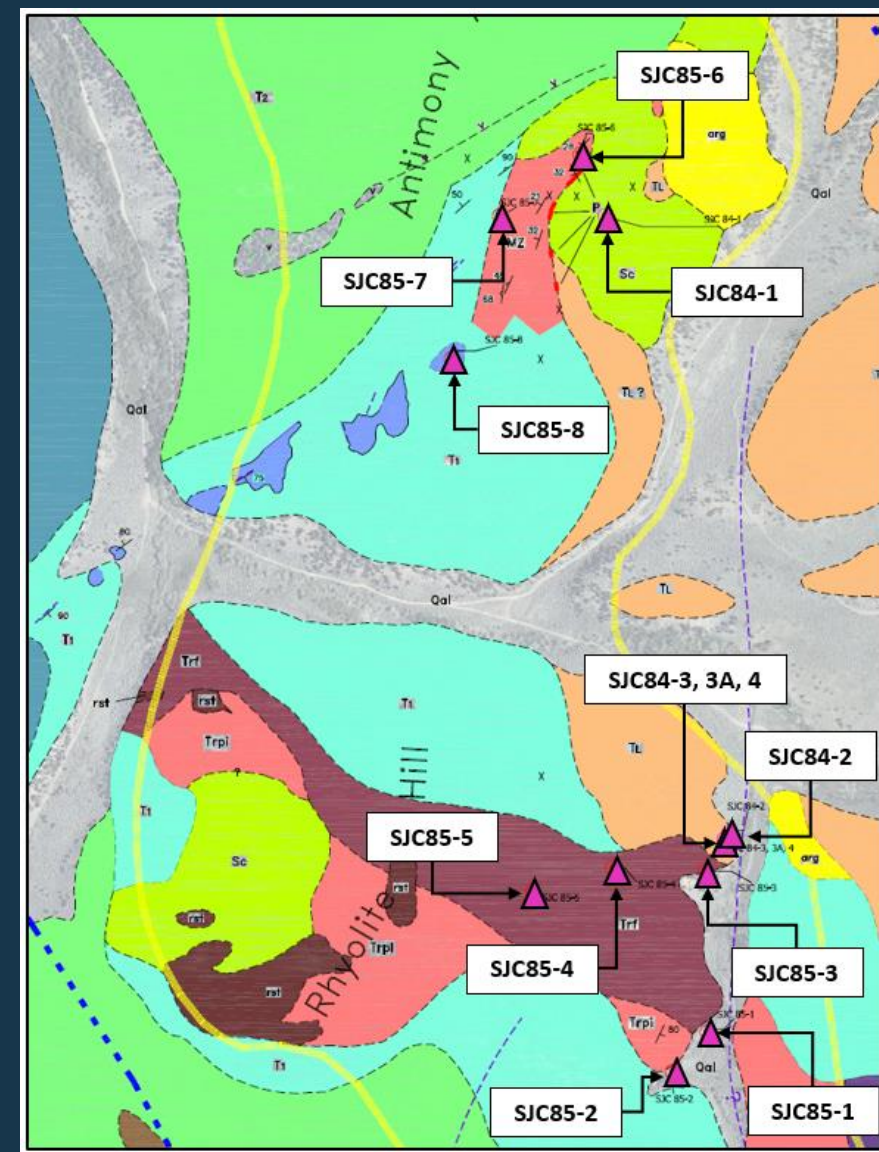
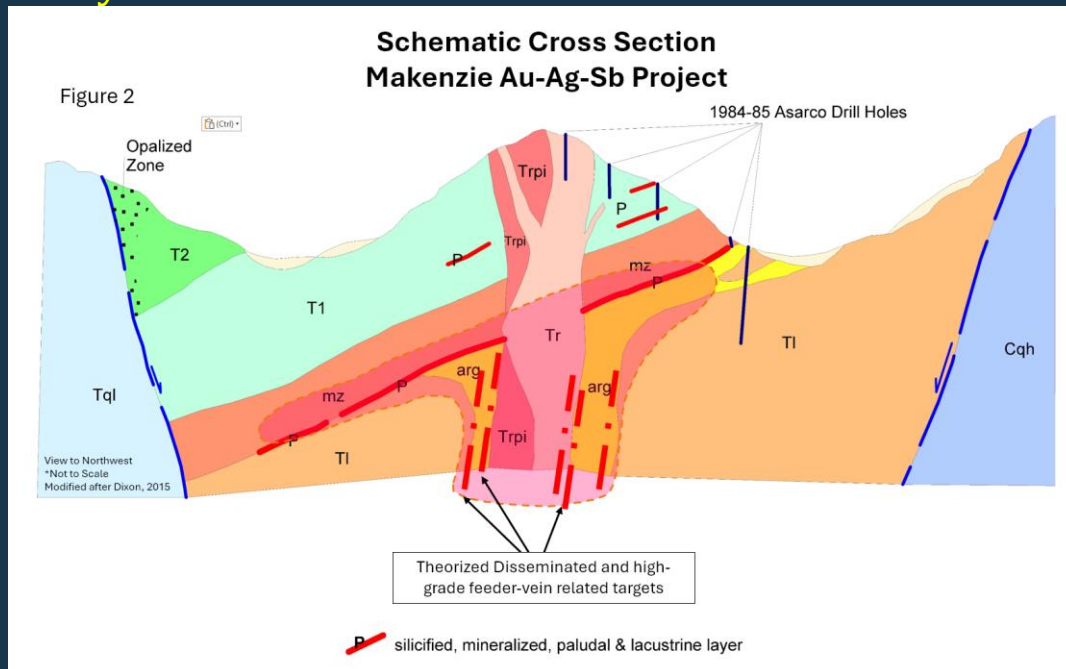
Pyritic, silicified, water-lain tuffaceous mudstone unit – may have acted as a sealing unit for over-pressuring.

Stibnite or Antimonite (the main antimony sulphide mineral) mineralisation within volcano-clastic sediments with fine, disseminated iron-oxides after pyrite.



Historic Exploration

- 1984/5 – ASARCO Exploration.
- 13 vertical rotary drillholes were completed focused on a possible near surface disseminated gold target.
- The first 2 vertical holes (SJC84-1 and 2) were drilled deep to a depth of 900ft (274m). The remaining 11 holes were drilled to a maximum depth of 290ft (88m). However the drillholes were poorly located to intersect the mapped structures and too short to intersect the targeted veining, identified by Meryllion.



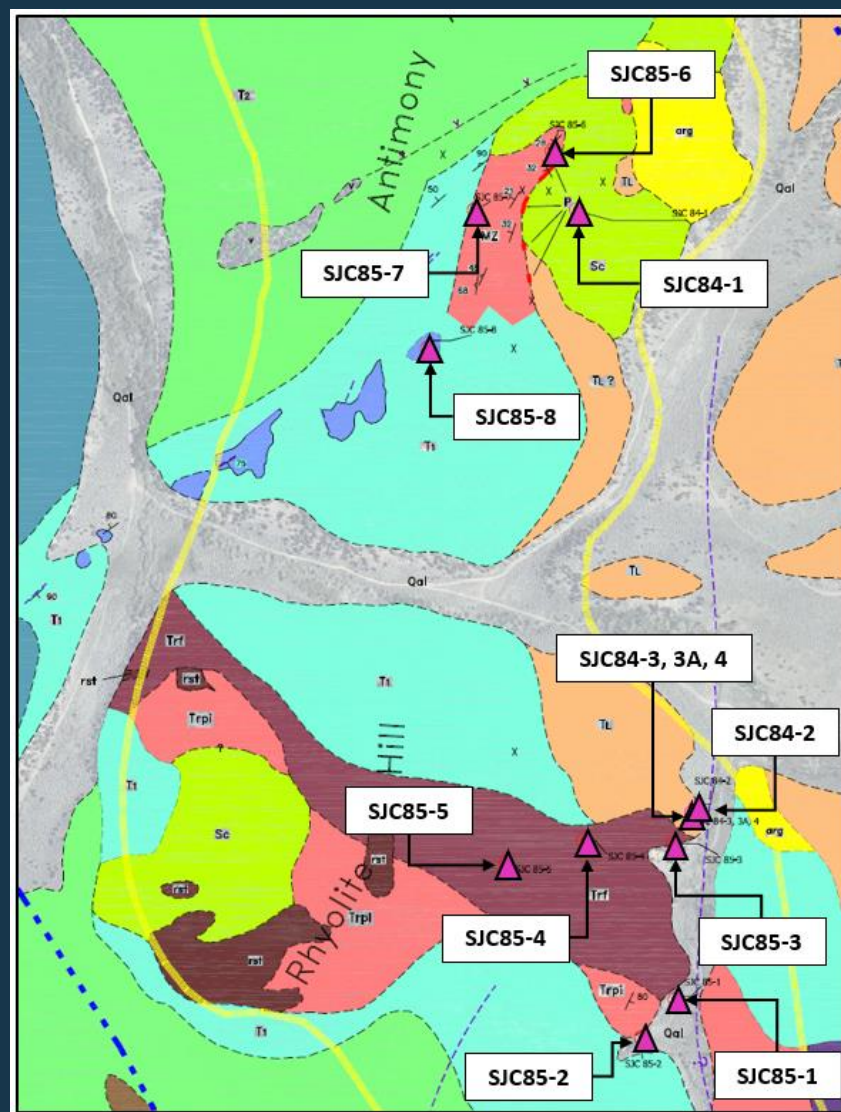
Asarco drill locations superimposed on the more recent Silverthorn geological mapping.

Interpretative Cross Section of Rhyolite Hill with the location of Asarco drillholes SJC84-2, 3, 3A, 4 & SJC85-3, 4 and 5.



Drillhole Assay Values from the 13 ASARCO drill holes – 1984/85.

- Short vertical rotary holes – targeting near surface disseminated gold.

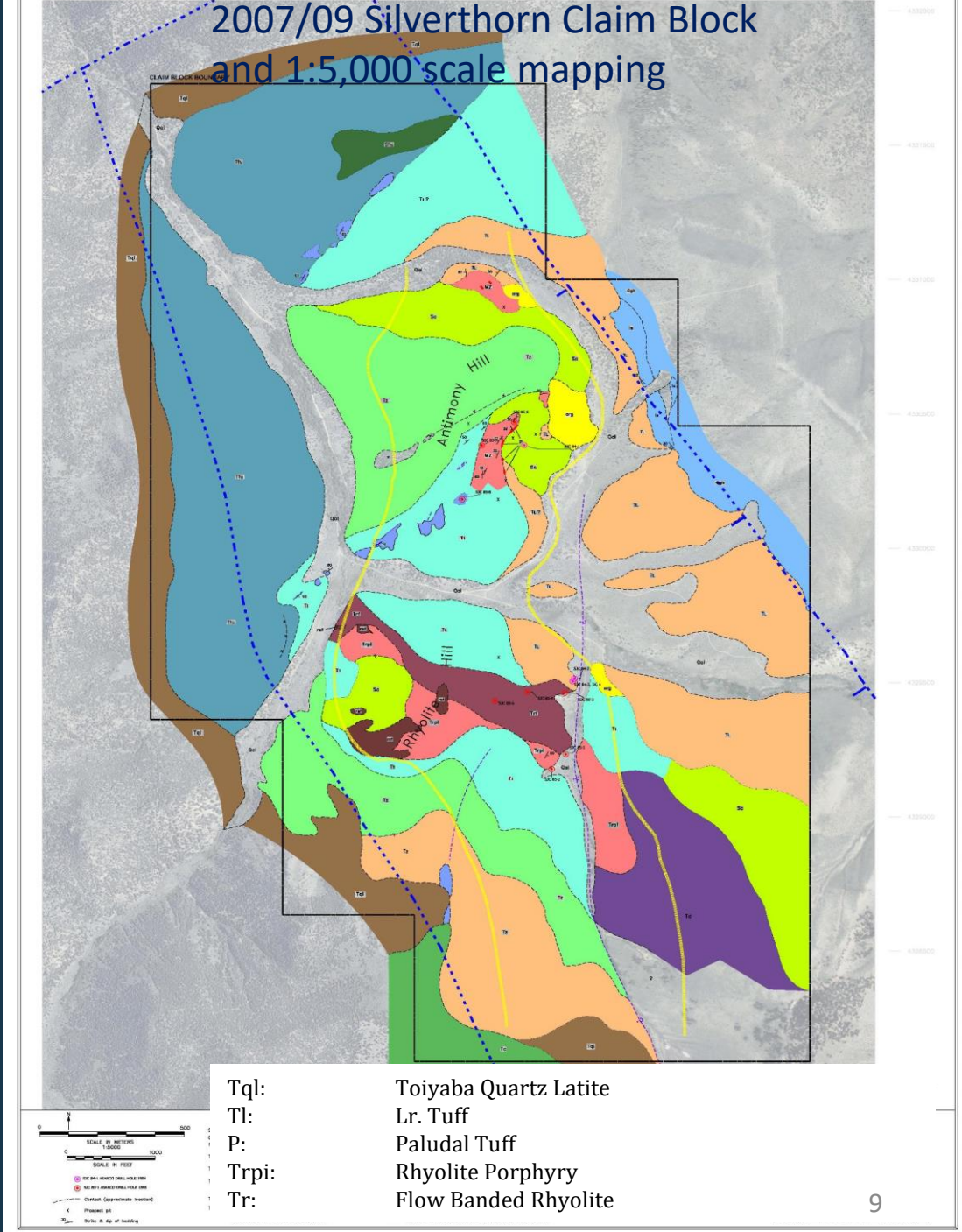


DRILL HOLE NO.	TOTAL DEPTH (FT.)	FROM	TO	WIDTH (FT.)	Au (ppm)	Ag (ppm)	METERS
SJC84-1	900	0	TD	900			
SJC84-2	900	0	TD	900			
SJC84-3	30	10	30	20	0.343		6.1
SJC84-3A	20	0	20	20	0.189		6.1
SJC84-4	20	0	20	20	0.994		6.1
SJC85-1	110	0	10	10	0.034		3.05
		10	40	30	0.411	9.6	9.15
		40	110	70	0.069	3.1	
SJC85-2	150	0	40	40	0.206	3.4	12.2
		40	50	10	0.377	8.6	3.05
		50	60	10	0.069	6.9	
		60	110	50	0.446		15.25
		110	150	40	0.206		12.2
SJC85-3	200	0	20	20	0.171	3.4	6.1
		20	80	60	0.686	7.5	18.3
		80	TD	200			
SJC85-4	290	0	30	30	0.491	6.2	9.15
		30	200	160			
		200	210	10	0.480		3.05
		210	290	80	0.103	0.7	
SJC85-5	100	0	100	100	0.446	16.1	30.5
SJC85-6	140	0	30	30	0.069	1.7	
		30	110	80	0.446	8.6	24.4
		110	140	30	0.240	2.4	9.15
SJC85-7	180	0	20	20			
		20	30	10	0.446		3.05
		30	60	30	0.103		
		60	180	120		2.1	
SJC85-8	254	0	254	254	0.103	7.9	8



Silverthorn Exploration 2007 – 09

- Mapping & Sampling across the claim block.
- 277 rock chip samples collected.
- A 100 x 100m soil sampling grid was conducted across the entire claim block
- Across the Rhyolite Hill target area the sampling was closed down to 100 x 50m where mapping had indicated more intense argillic alteration.
- > 700 Soil Samples assayed.
- A detailed ground Magnetics and a VLF Geophysical Survey were completed in 2008. This data is currently being digitized and reviewed to see if this will assist with drillhole platform locations and targetting.

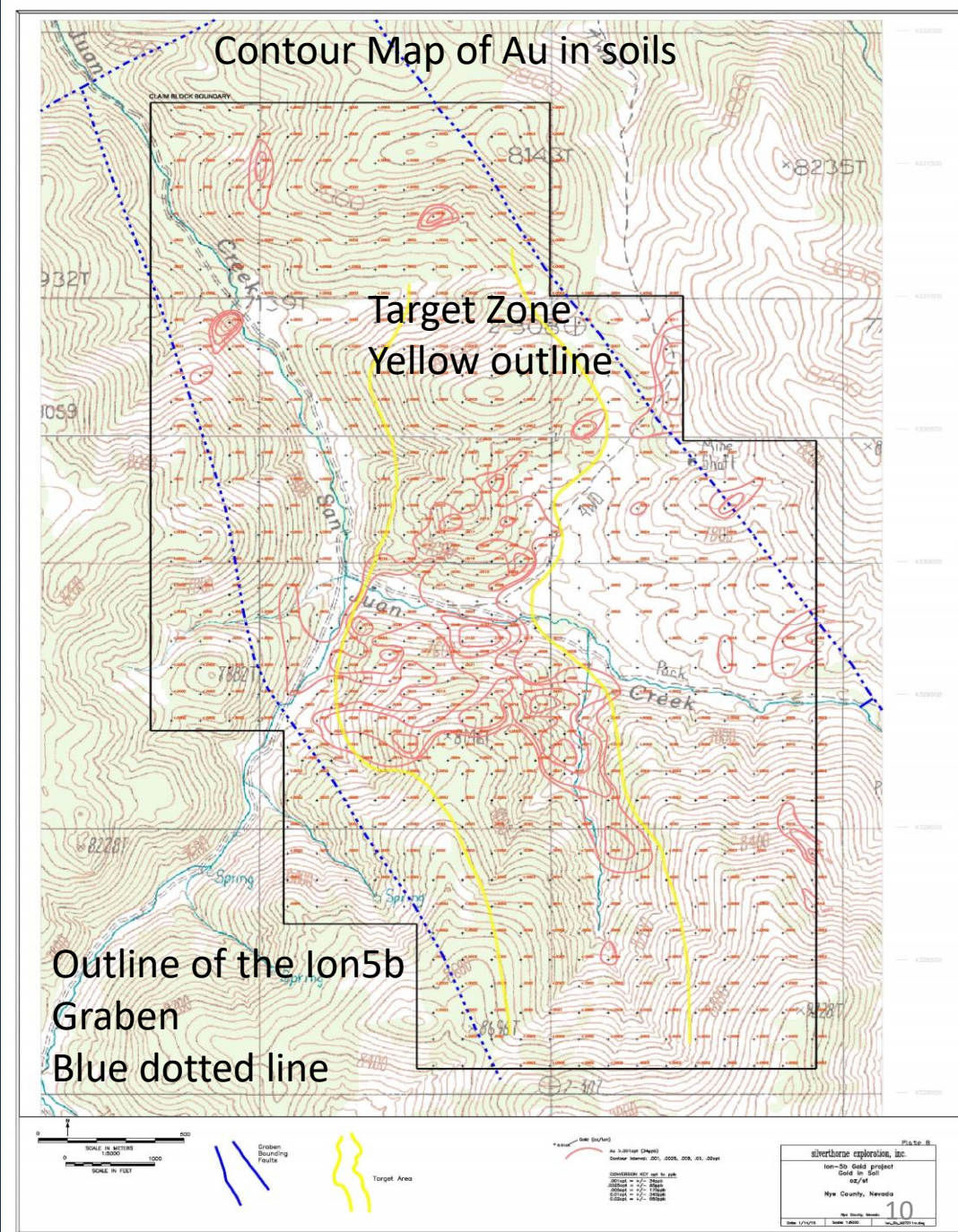
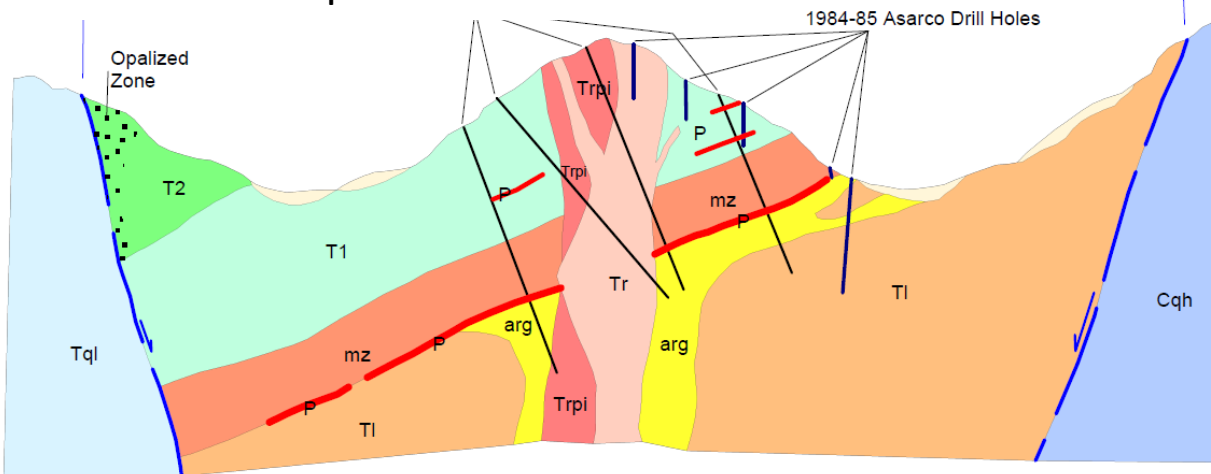


Silverthorn Exploration 2007 – 09

- In 2009 Silverthorn proposed a series of drillholes to test the depth/vein potential of the area around Rhyolite Hill.
- This program was never initiated.



Proposed Silverthorn Drilling across Rhyolite Hill to a planned maximum depth of 750m

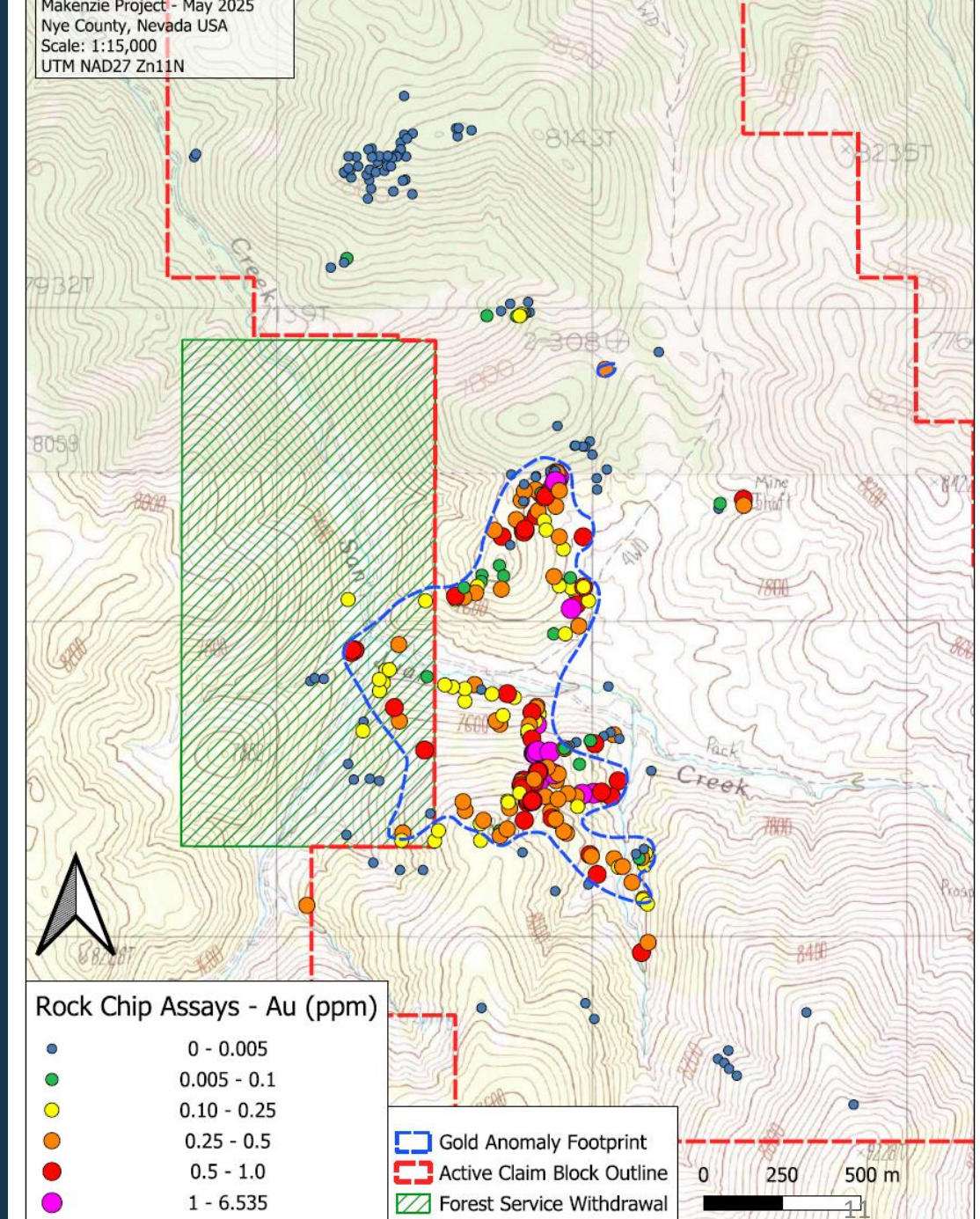


La Cuesta International (LCI/BMR) 2015 – Present

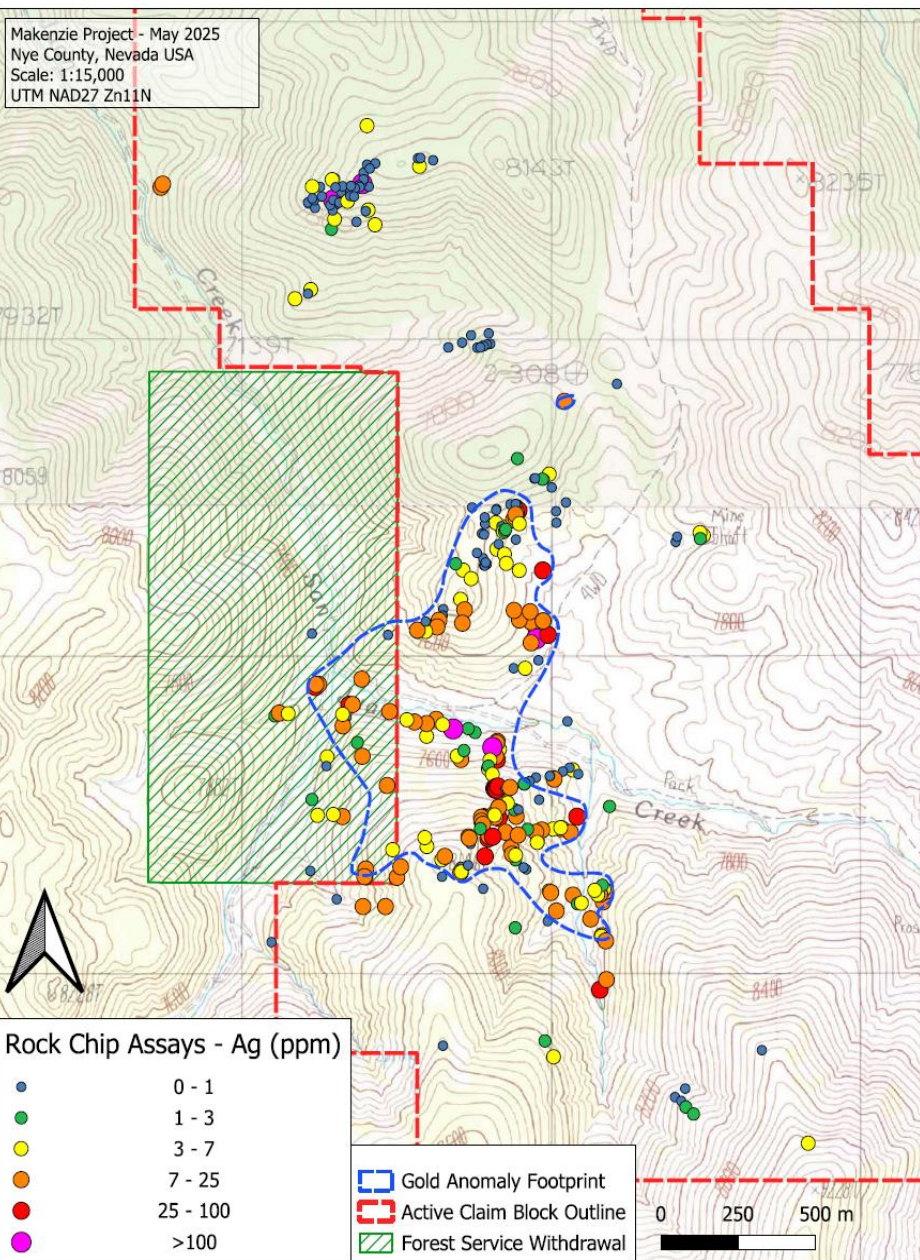
- 60 Rock Chip Samples
- Reconnaissance Mapping – structures/veining/alteration.
- Confirmation of geological environment – low sulphidation epithermal model.
- Collation of geochemical data – contoured maps.

Rock Chip sampling from 2015 reported the following assay results:

- 2.90g/t Au + 70.2g/t Ag + 288ppm Sb over 2m (True width) within Iron stained flow banded rhyolite.
- 1.30g/t Au + 11.5g/t Ag + 290ppm Sb over a 2 x 2m within outcrop of clay altered intrusive.
- 1.74g/t Au + 11.4g/t Ag + 356ppm Sb over 3m (True width) within a silicified Tuff unit.
- 1.18g/t Au + 17.0g/t Ag + 162ppm Sb over a 3m section of mixed intrusive and breccia.
- 0.33g/t Au + <0.2g/t Ag + 1,235ppm Sb over a 4m (TT) section of clay altered finely banded siltstones & sandstones



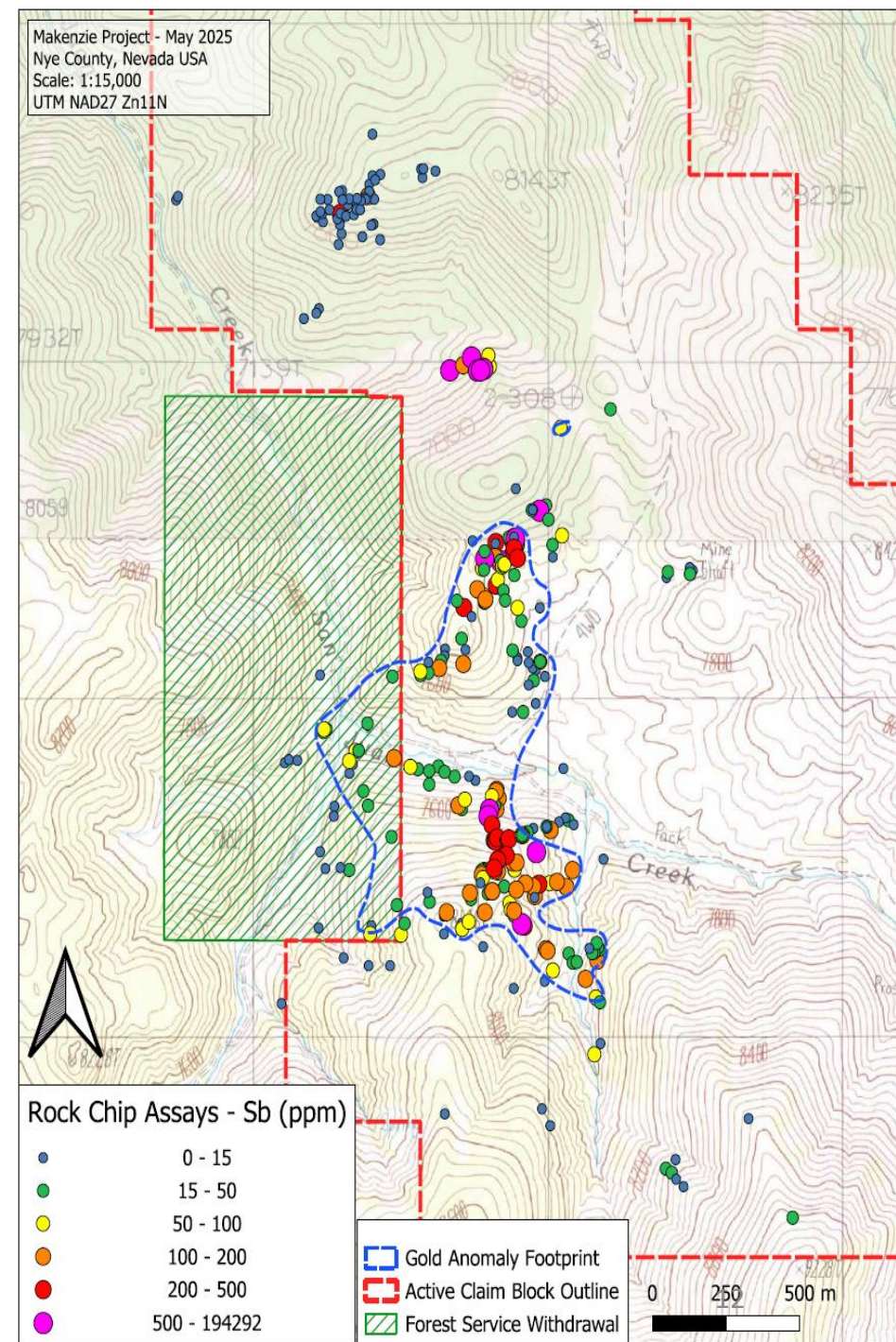
Makenzie Project - May 2025
Nye County, Nevada USA
Scale: 1:15,000
UTM NAD27 Zn11N



Geochemical Anomalies across large areas.

- An approx. 0.67 square kilometer >100 ppb Au anomaly from the rock chip sampling & reconnaissance mapping.
- Rock chip assays up to 6.535 ppm Au.
- 58 samples exceeding 0.5 ppm Au.
- 156 samples exceeding 0.1 ppm Au.
- Additional geochemical anomalies across similarly large areas for Ag, As, Hg, and Sb

Makenzie Project - May 2025
Nye County, Nevada USA
Scale: 1:15,000
UTM NAD27 Zn11N





Rhyolite Hill – view looking south-west from Antimony Hill



Strong argillic alteration of the Lower Tuff unit at the base of Antimony Hill

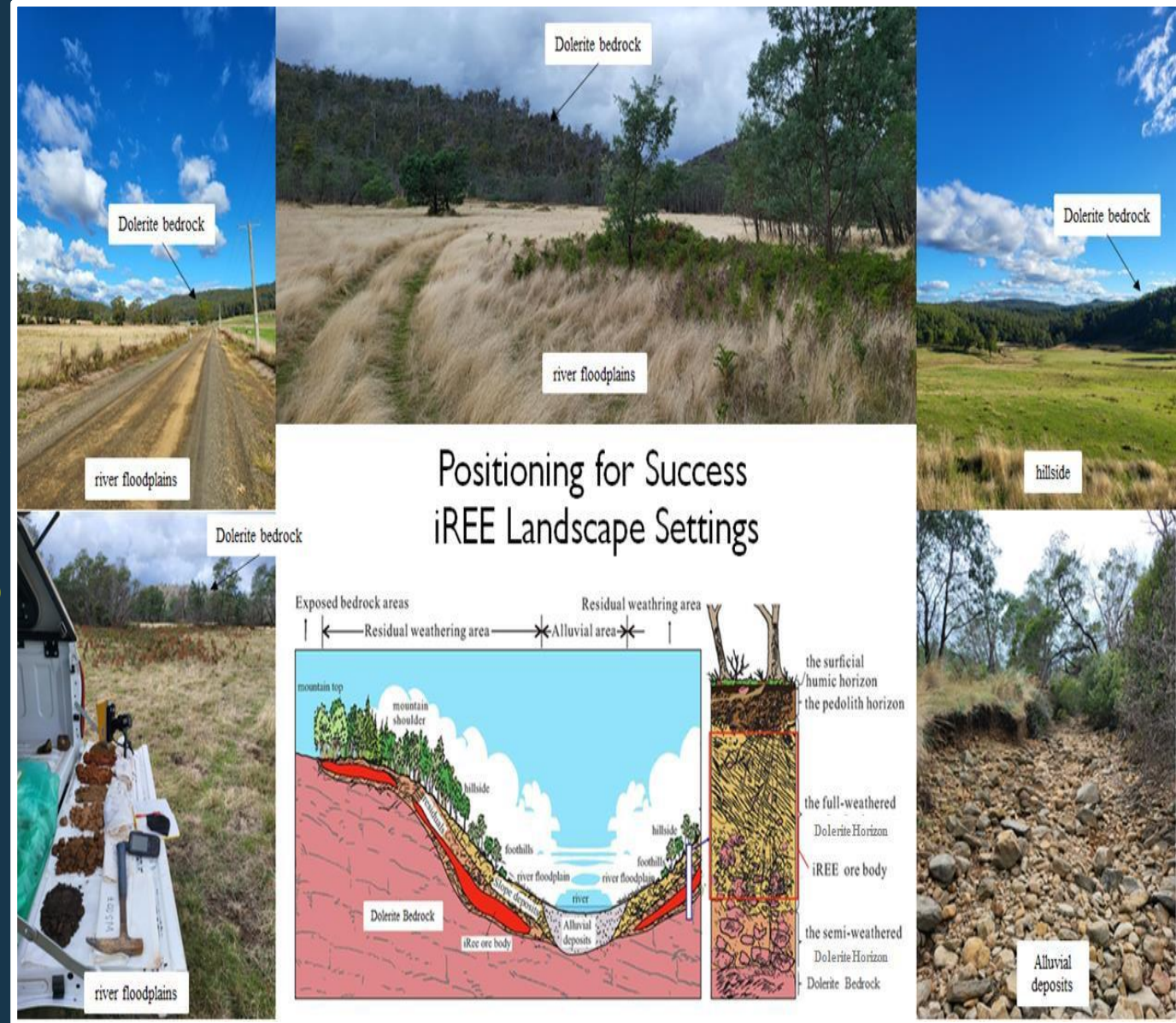
Proposed Exploration 2025

- **Review of all Historical data.**
- **Digitisation and review of the Geophysical data from Silverthorn exploration (2007/08) and reinterpretation.**
- **Detailed surface mapping and infill sampling where required.**
- **Helicopter borne TM/MAG survey of entire claim block.**
- **Commence permitting of drill program based on all mapping, geochemistry and geophysics.**



Ionic Adsorption Clay Hosted Rare Earths Project, Tasmania, Australia

The Company also has the rights to acquire up to a 100% interest in the Westbury and Tasmanian Strategic Green Metals ionic adsorption clay hosted rare earth elements (REE) projects located in northeast Tasmania, Australia with a total tenement area of approximately 800 kms². Meryllion's projects are situated along strike and/or adjacent to discoveries by ABx Group (ASX: ABX). ABx has reported (5th May 2025) that Tb and Dy in all of ABx's rare earths resources are the highest of any ionic adsorption clay deposit in Australia and are amongst the highest globally.



Management, Directors & Advisors



Richard Revelins
CEO + Director

Richard has over 35 years' experience in international investment banking specializing in corporate finance and corporate advice, predominantly in the mining and natural resources industry. He was formerly the chairman of Atlas Iron Limited and Gold Road Resources Ltd.



David Steinpreis
Non-Exec
Chairman

David has had a long and distinguished career as a partner of an international accounting firm where he specialized in strategic corporate advice and taxation.



Guy Charette
Non-Exec
Director

Guy is a transaction Orientated corporate Finance lawyer, he has over thirty years of experience advising securities, corporate financing, mergers and acquisitions.



Michael Kozub
Corp Secretary

Michael is a lawyer with a practice focused on securities, corporate financing, mergers and acquisitions, corporate and commercial law. He also provides advice and assistance to reporting issuers on their ongoing corporate governance.



Chuck Forrest
CPA, CA
CFO

Chuck is a CPA, CA who qualified with PWC in Canada. He has over 25 years experience in the minerals sector.



Mark Pryor
SEG, FGS, IOD, SACNASP
Technical Advisor
North America

Mark is a geologist with a 40 year track record of successfully advancing multiple precious metal, copper, coal, REE and Li projects from discovery through to exploitation.

The Makenzie Project

- A low sulphidation epithermal multi-vein gold – antimony target.
- Located in a favourable mining friendly location, some 48kms NNW of Round Mountain and having a similar geological setting.
- Large geochemical footprint >2.5 x 1km.
- Historic drilling reported anomalous gold values over significant widths close to surface.
- One of the largest untested gold/silver/antimony projects in Nevada



Contacts

- **Rick Revelins; CEO**
- **Cell: 310-405-4475**
- **Rrevelins@PeregrineCorporate.com**
- **Mark Pryor; Technical Advisor, N. America**
 - **Markjpryor@gmail.com**